

2019

Annual Report



ALiVE

SHELTER • HEALING • HOPE



CONTENTS

Mission & Programs	2
Critical Services	3
Program & Service Outcomes	4
Client Impact Story	4
Resources & Fiscal Management	5

2019

Mission

ALIVE's mission is to provide counseling, emergency sanctuary and other critical services to adults and children impacted by domestic abuse, as well as to increase awareness in order to create a supportive community.



Programs

Nights of Safety

Unique in the St. Louis area, this emergency sanctuary program, which partners with confidentially located area motels, is utilized when there are no available beds in St. Louis area domestic violence shelters. Domestic violence shelter space is very limited and area shelters are often filled to capacity. When a woman has several children, it makes finding shelter space even more difficult. Because of the flexibility of using area motels, ALIVE's program is scalable and can accommodate large families. Our sanctuary is never full.

Individual Adult Counseling



Our adult counseling is designed to be crisis-oriented and last from six weeks to six months. Most clients in individual therapy receive one-hour sessions weekly. ALIVE is fortunate to have licensed therapists specializing in domestic abuse-related issues to conduct our adult counseling services. During individual counseling sessions, clients formulate personal goals and objectives. While being affiliated with ALIVE's services, clients consistently report increases in their levels of self-esteem, satisfaction with life, and the amount of control they feel they have over their lives.



Children's Treatment Program

ALIVE started the first and only non-residential counseling program in the St. Louis area specifically designed for children who have been affected by domestic violence. Most other programs take place within a shelter environment. However, the greater St. Louis area provides a very limited amount of shelter space for children exposed to domestic violence. The overall goal of our Children's Treatment Program is to enhance the psychological well-being of the child, adolescent, and parent(s). Treatment often includes play therapy or art therapy and individual and family counseling.

Lethality Assessment Program

ALIVE partners with the Crime Victim Advocacy Center (CVAC), St. Louis County Police Department, and Metropolitan Police Department, City of St. Louis for the Lethality Assessment Program (LAP). The LAP is a multi-pronged homicide prevention intervention designed to identify victims of DV at the greatest risk of being seriously injured or killed by their partners and connect these high-risk victims to ALIVE, which is designated as the immediate DV services LAP partner.

Critical Services

Crisis Hotline and Crisis Intervention

Professional staff and trained volunteers provide immediate assistance to victims of family violence 24 hours a day, seven days a week, 365 days a year. The initial crisis call is often the first time someone will listen to a victim's story without criticizing or passing judgment.

The ALIVE advocate answering the crisis line can:

- Complete a safety plan with the victim
- Give information about victims' legal rights, including the Crime Victims' Compensation Fund
- Provide information about ALIVE's services
- Answer questions the victim might have
- Make appropriate referrals
- Schedule an intake

Our crisis line, answered by ALIVE Crisis Intervention Specialist staff, ensures that victims have immediate access to well-informed advocates who explore options and offer appropriate referrals. Assessment and safety planning provide callers with the necessary tools to establish physical safety for themselves and their children. Victims feel less isolated, less responsible for the violence, and more empowered when they have spoken to advocates who are available for support.

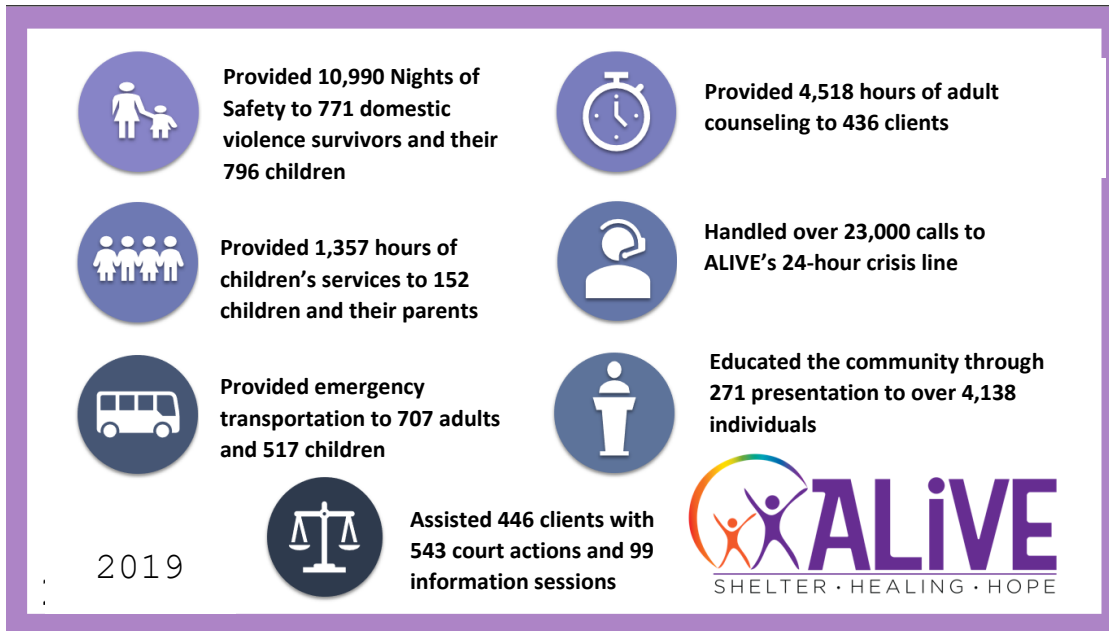
Emergency Transportation

When victims call ALIVE's 24-hour crisis line for emergency shelter, they can be assured that they will not have to spend another night in danger, despite a lack of personal resources or local shelter availability. ALIVE provides transportation to adults and children in crisis- using cab, busses, and gas cards.

Court Advocacy

Understanding the court process can be difficult in a nonviolent situation, and when an emotionally charged domestic violence situation is added to the equation, the issue can become even more confusing. Once clients have decided they need an Order of Protection, an ALIVE court advocate can help them understand and maneuver through the court system. We also advocate with clients during divorce and child custody hearings.

Program & Service Outcomes for FY 2018/2019



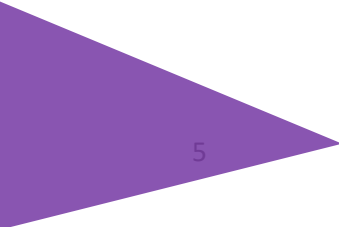
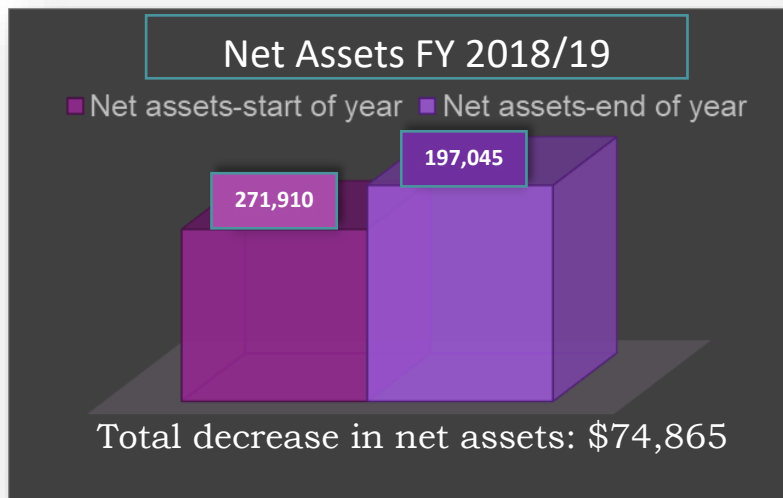
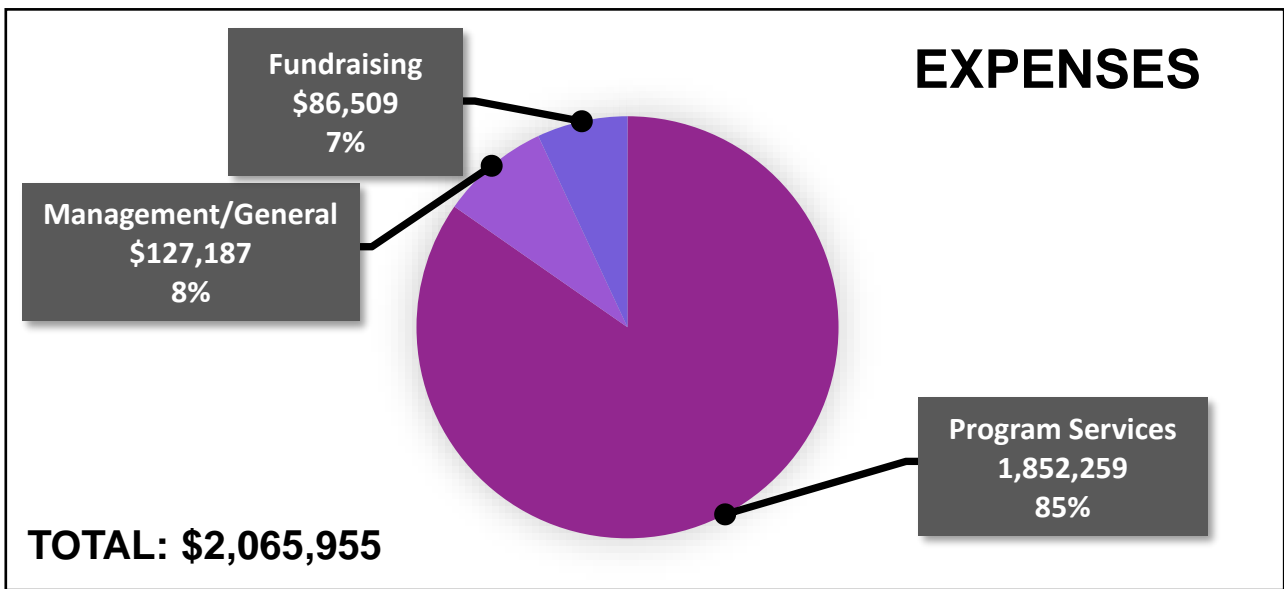
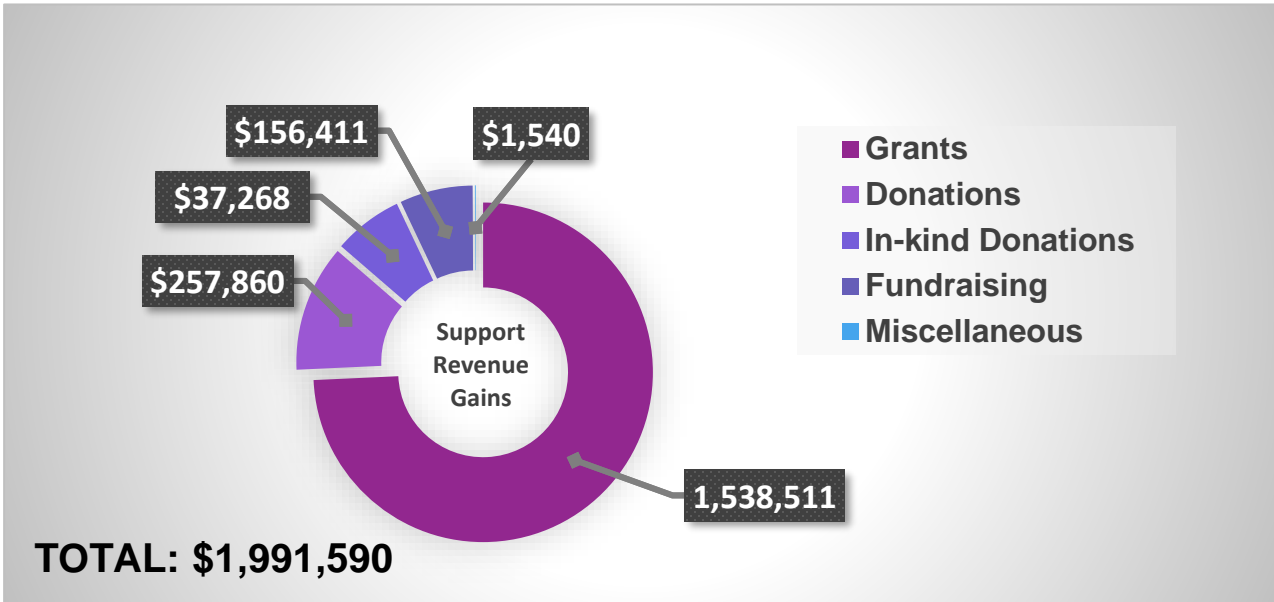
Client Impact Story



Luciana

When it comes to the impact of intimate partner violence, the trauma can be everlasting. A few years ago, a woman named Luciana was referred to ALIVE through a family member who was utilizing ALIVE services. When she called the crisis line, she was connected with an advocate who actively listened as she told her story. She was calling from a rural community out in Jefferson County and was looking for resources to help her navigate her relationship. Luciana had been with a man for over 6 years whose abuse ranged from emotional, physical, sexual, and financial. They shared two children, Matteo, 6, and Carlos, 9. Luciana felt as if she had a lack of support and did not know where to turn. The advocate explained ALIVE services, and soon after, Luciana decided to come to individual counseling. When Luciana first started counseling, her self-esteem was at an all-time low, as she continued to doubt her own self-worth. However, through the empowerment of counseling and participating in a support group, Luciana was able to work on setting healthy boundaries and beginning to learn new ways to practice self-love. As she was making significant progress on her journey to heal, she had encountered some setbacks as her abusive partner was deported back to Honduras. In the process of becoming a single parent, Luciana lost touch with ALIVE. A few years later, Luciana reconnected with ALIVE when the trauma of her past started to weigh too heavy on her shoulders. Even though the intimate partner violence occurred a few years prior, the trauma still rippled through the core of her family. This time Luciana was also interested in connecting her children with the Children's counselor as she realized they needed space to heal as a family. The trauma from intimate partner violence can be everlasting; however, at ALIVE, there are no time limits placed on healing.

Resources & Fiscal Management



2019

Annual Report



Connect With Us! 

(314) 993-7080 | alivestl@alivestl.org